



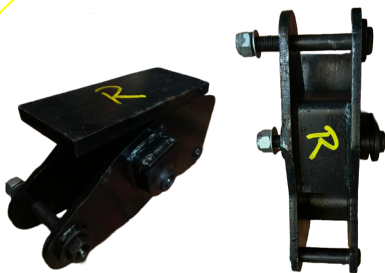
Suspension & Springs



www.herbstmachinery.com



Description	Part No.
5 Leaf Spring	HS0001
7 Leaf Spring	HS0002
8 Leaf Spring	HS0003
9 Leaf Spring	HS0004



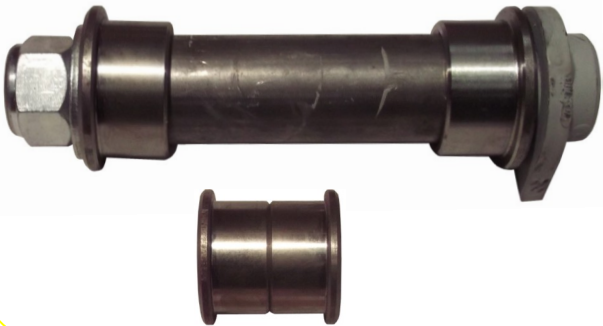
Description	Part No.
Right Hand Rocker	HS0005



Description	Part No.
Left Hand Rocker	HS0006



Description	Part No.
7/8 Shackle Bolt c/w Plastic Bush	FAB7/8x6C
7/8 Shackle Bolt	FAB7/8x6
Plastic Bush	FAB7/8x6PB



Description	Part No.
Centre Rocker Pin	H004
Centre Pin Bushings	H020



Description	Part No.
Front Eye Hanger	HS0007



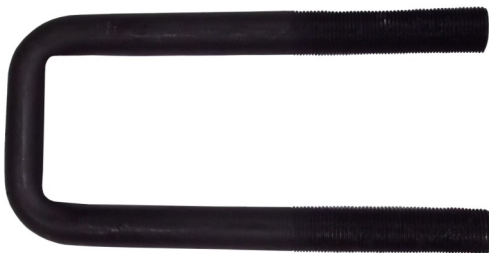
Description	Part No.
Back Slipper Hanger	HS0008



Description	Part No.
EN16 Towing Eye	HS0016



Description	Part No.
Swivel Towing Eye bpt 35001	HS0015



Description (mm)	Part No.
U Bolt 210x70	HS0009
U Bolt 260x90	HS0010
U Bolt 280x90	HS0012
U Bolt 280x100	HS0013
U Bolt 310x100	HS0014
U Bolt 170x125	HS0026

Complete with Nuts & Washers



Description	Part No.
Drawbar Red 14-16T	HS0017
Drawbar White 18-20T	HS0018



Description	Part No.
Ramp Springs Set	HS0019
Right Ramp Spring	HS0019R
Left Ramp Spring	HS0019L



Description	Part No.
Wire Rope	HS0020



Description	Part No.
Cattle Trailer Back Door Spring	HS0021



Description	Part No.
Axle Seat	HS0022



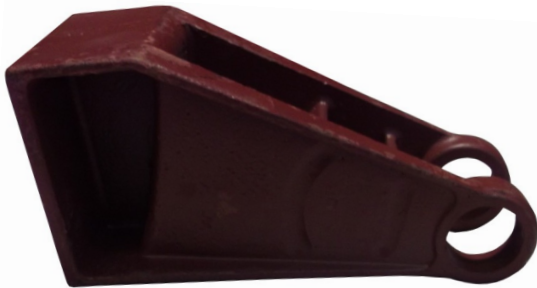
Description	Part No.
3 Leaf Parabolic Spring	HS0023



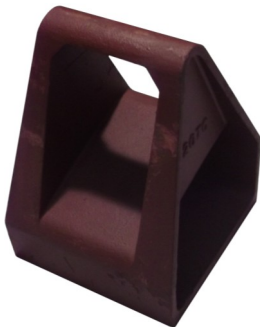
Description	Part No.
Rigid Torque Arm	HS0023A



Description	Part No.
Adjustable Torque Arm	HS0023B



Description	Part No.
Front Hanger	HS0023C



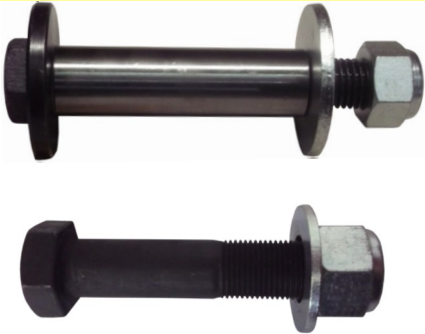
Description	Part No.
Rear Hanger	HS0023D



Description	Part No.
Equaliser Assembly	HS0023E



Description	Part No.
Balance Beam Bush	HS0023F



Description	Part No.
Equaliser Pin Assembly	HS0023G
Torque Arm Pin Assembly	HS0024



Description	Part No.
Torque Arm Bush	HS0025